

## Press Release

WSCAD at Light+Building

29/01/2020

### **Seamless engineering of building automation and electrical installations**

Bergkirchen. Suppliers of technology for buildings, building automation companies, planning offices and electrical installers need efficient tools to optimize the costs and enable efficient sharing of information. WSCAD GmbH will show the innovative features of its unique "Little Closed BIM" E-CAD solution in Hall 11, Booth C80 at Light + Building, held from March 8th to 13th in Frankfurt am Main, Germany. WSCAD SUITE X enables interdisciplinary engineering for building automation, electrical and fluid power systems using the same database.

*"Modern buildings require an interdisciplinary CAE tool to design reliable building automation,"* explained Markus Wittke, Product Manager at WSCAD GmbH. The WSCAD Building Automation (BA) module encompasses all automation planning stages of a construction in one single location. Field devices, actuators and sensors can be depicted with precision in their functional view and location view. All captured data points including their values can be processed in every discipline of the WSCAD SUITE: from the automation diagram and the electrical schematics to the programmable controller terminals (PLC/DDC). This shortens project times by up to 20 percent, as practical installations show.

Electrical installation design is done by using the Electrical Installation module. It reads floor plans, places any captured field devices, and can automatically determine the required cable lengths. It also creates the associated cable and material lists at the touch of a button.

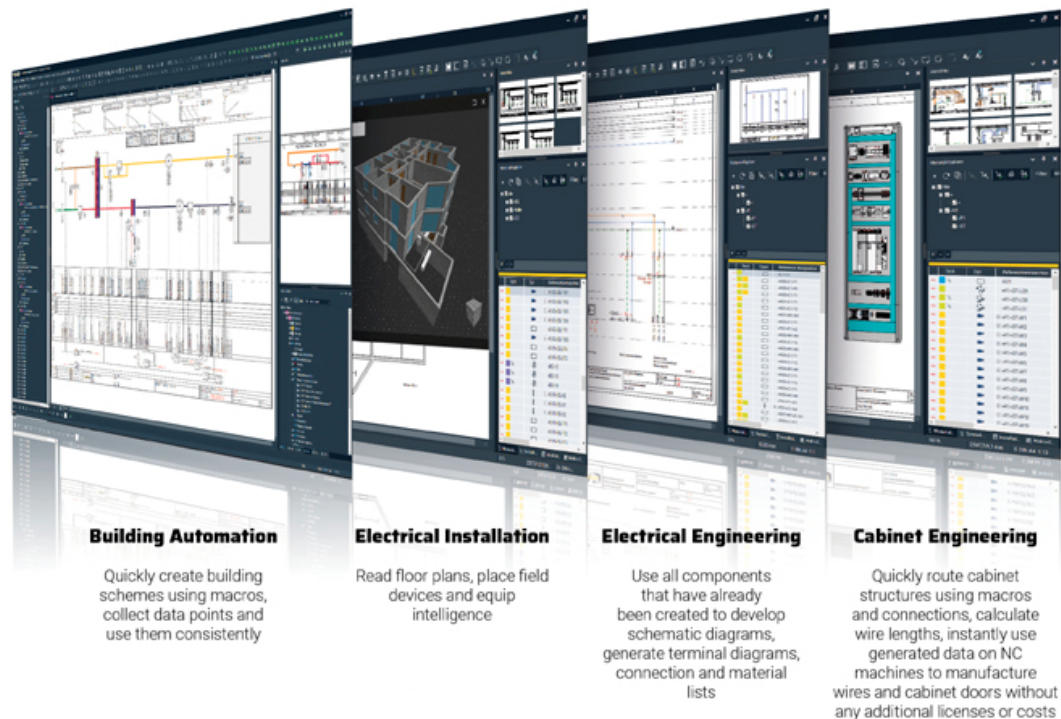
*"Only WSCAD SUITE can seamlessly connect building automation, electrical installation, electrical engineering, cabinet design, piping and instrumentation and fluid power in on single application,"* added Axel Zein, CEO WSCAD GmbH.

Innovations on show at Light + Building, Hall 11, Booth C80 include the new Building Augmented Reality App as well as new features for Building Automation module to manage the properties of devices. With the Building AR App technicians or electrical installers can simply scan a room using their mobile device. The Building AR App can then automatically transfer the scanned room to the WSCAD SUITE X for further editing, saving time, eliminating errors and increasing engineering quality. WSCAD SUITE X supports the new 3-layer model from VDI 3814 GA making WSCAD SUITE X ready for the new building automation standard.

Companies that manufacture control cabinets can benefit from the Cabinet Engineering module that automatically routes all connections and calculates wire lengths with a mouse click. Included in the software module are machine interfaces so companies can directly manufacture wires, wire sets, cabinet doors and mounting plates on NC machines without additional costs.

Training, consulting and various on site services are provided by WSCAD Global Business Services helping customers to quickly raise their productivity with WSCAD Electrical CAD solution.

**WSCAD at Light + Building, March 8-13, 2020, Hall 11, Booth C80**  
[www.wscad.com](http://www.wscad.com)



*Seamless engineering of building automation and electrical installation with the Electrical CAD solution from WSCAD.*

### Contact

WSCAD GmbH  
Dieselstraße 4  
85232 Bergkirchen, Germany  
Phone: + 49 8131 / 3627-0  
[www.wscad.com](http://www.wscad.com)  
[info@wscad.com](mailto:info@wscad.com)

### Presscontact

Thomas Walker  
walkerbretting Corporate Publishing GmbH  
Phone: + 49 172 / 788 69 27  
[www.walkerbretting.com](http://www.walkerbretting.com)  
[presse@wscad.com](mailto:presse@wscad.com)

### About WSCAD

WSCAD is part of the Buhl group with more than 700 employees. WSCAD has been developing electrical CAD solutions since three decades. Customers include medium-sized companies, international corporations and engineering service providers. More than 35,000 users rely on WSCAD SUITE as their electrical CAD solution. The software is based on one core platform that covers six engineering disciplines: Electrical Engineering, Cabinet Engineering, Piping and Instrumentation, Fluid Engineering, Building Automation and Electrical Installation. Any change made to a component in one discipline immediately reflects in all the other disciplines saving time and raising quality. WSCAD methodologies for standardization, reuse and automation significantly reduce engineering time from several weeks to just a few hours or even minutes. At the same time, these practices also ensure a much higher quality of work.



wscaduniverse.com is by far the largest electrical CAD data library on the market offering over 1.4 million parts from more than 300 manufacturers. It is the only digital library that supports both WSCAD and Eplan\* users alike as well as 3D CAD data. Use and data provisioning is free of charge for all users and manufacturers of components and equipment.

WSCAD also offers apps for mobile devices: maintenance engineers and service personnel are now able to scan components within the control cabinet by using the WSCAD Cabinet AR App. This way they get instant access to the schematics, device tags, part data, 3D views and even the original data sheets from the manufacturers. Building engineers can use the Building AR App on site to scan rooms and then edit the scanned floor plans in WSCAD SUITE for building automation and electrical installation. The WSCAD portfolio is completed by eleven seamlessly integrated service offerings from WSCAD Global Business Services. Engineering and migration checkups, consulting and training, digitization of paper documents and conversion of third-party electrical CAD formats quickly help to shorten engineering times and increase productivity.

*\* The brand names, logos and trademarks stated here remain the property of their respective owners. The list of companies or their logos does not imply an endorsement or direct connection to WSCAD GmbH.*