

Press Release

22.10.2019

WSCAD exhibits the first functionalities of the new SUITE X Plus at SPS in Nuremberg

BERGKIRCHEN. WSCAD GmbH from Bergkirchen is to exhibit the many new product innovations in its E-CAD solution at the smart production solutions (SPS) exhibition in Nuremberg. One particular highlight will be the first new functions from the next version of SUITE X Plus with its completely new Editor and further improvements in overall performance, app expansion and interfaces.

New Editor for more performance

At the heart of the future WSCAD SUITE X Plus is the new Editor which will improve and accelerate the entire design process by improving performance and providing 100% DXF and DWG data compatibility. Plans available in DXF or DWG formats can also now be edited in their original data format in the WSCAD SUITE, meaning that the previous conversion and associated time-consuming data import/export will no longer be necessary. The time saved is significant, in particular, for big drawings with many hundreds of thousands of elements - just open the drawing, change an element and close the drawing again.

New "Building AR" – the second app in the WSCAD SUITE

It is often the case that up-to-date floor plans and wiring plans in the form of PDF or DXF data are missing for existing buildings and electrical installations. Instead of laborious new surveys and conversion into an electronic format, WSCAD now offers the new "Building AR" app for mobile devices. Building engineers, electricians, electrical planners and also private users can simply use a tablet to scan the room and WSCAD SUITE X Plus will log the precise electronic floor plans for the next planning phase of the building technology and electrical installations. This saves a great deal of time, avoids errors and improves planning quality.

The previous Augmented Reality App for wiring and maintenance has been renamed "Cabinet AR". Both apps form part of the WSCAD SUITE and are available in the Apple App Store and from Google Play. Cloud storage options have also been expanded. Alongside Microsoft OneDrive and Dropbox, Google Drive and Apple iCloud are also now supported as possible storage locations for plans and documents generated with the WSCAD SUITE.

wscaduniverse.com V2 – bigger and faster

The world's most powerful E-CAD data library wscaduniverse.com continues to grow rapidly and now totals over 1.4 million datasets and 287 manufacturers. Along with the electronic components it also includes datasets in WSCAD and Eplan*-EDZ as well as in native CAD formats such as the widespread standard STEP. In September 2019 alone over 7,000 Step and 144,368 new WSCAD datasets were added. New for Version 2 is the underlying and reworked database which is up to 10 times faster and is also compatible with the ISO/IEC-compliant data standard eCl@ss. With immediate effect complete equipment catalogues and project part lists can be simply forwarded or adopted into electrical planning. Discontinuity between machine builders and cabinet engineers is now consigned to the past.

The new search engine has also been reworked and is considerably faster than before, with requested information being displayed quickly and clearly. Also new are the manufacturer widgets, such as those from Schneider Electric, which considerably simplify product selection. Of interest to manufacturers are the expanded statistics for use on the part datasets they provide. Access to part data is free-of-charge after registration.

New interfaces

The numerous interfaces to PLM and ERP systems as well as to other automation suppliers optimise work processes and avoid data disruption. The new interfaces available with Service Pack 3 of the SUITE X include the Siemens TIA-Portal (programming of the control unit), M-Print PRO from Weidmüller (label texts) and Clip Project Planning and Project Complete from Phoenix (editing of terminal strips).

The interdisciplinary, database-based WSCAD E-CAD platform is a modular and scalable electrical engineering solution which accurately maps and controls planning and engineering processes in industry and buildings automation. WSCAD will be exhibiting all the new features and highlights of software-supported electronic construction on its stand. Experts will also be on hand to explain the important new features and innovative functions which ensure productive and consistent use in the six disciplines of electrical engineering, cabinet engineering, process and fluid engineering, building automation and electrical installation.

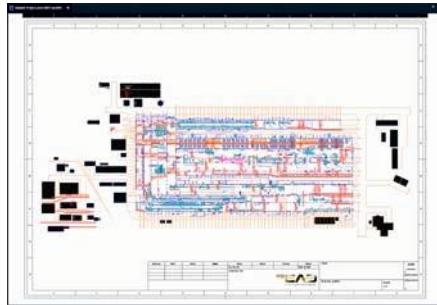
www.wscad.com

WSCAD at SPS, Hall 6, Stand 328, 26-28.11.2019

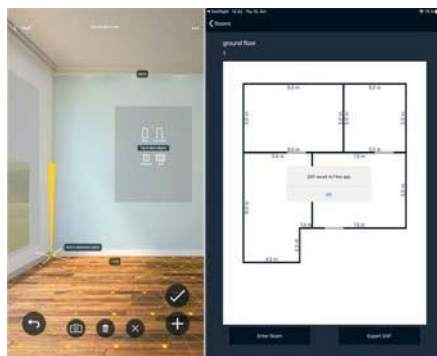
Images:



WScAD will exhibit the first functionalities of the new SUITE X Plus at SPS in Nuremberg from 26-28.11.2019, Hall 6, Stand 328.



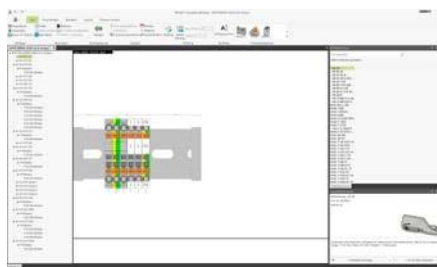
The new Editor in the WScAD SUITE X Plus opens native DWG and DXF files without conversion and as the previous data import/export is no longer required, this saves huge amounts of time particularly for drawings with many hundreds of thousands of elements. It is also significantly faster when compared to other native DWG/DXF editors.



With the new "Cabinet AR" app, building engineers, electricians, electrical planners and also private users can scan rooms and immediately continue work on floor plans saved as DWG/DXF in WScAD SUITE X Plus.



The new version 2 of the world's most powerful E-CAD data library wscaduniverse.com has a completely reworked user interface with a faster database and new functionalities, including support for the ISO/IEC standard eCI@ss.



One of the new interfaces of the WScAD SUITE X Plus is Project Complete from Phoenix Contact

Contact

WSCAD GmbH
Dieselstraße 4
85232 Bergkirchen
Tel.: 08131 / 3627-0
www.wscad.com
info@wscad.com

Press Contact

Thomas Walker
walkerbretting Corporate Publishing GmbH
Tel.: 0172 / 788 69 27
www.walkerbretting.com
wscad@walkerbretting.com

About WSCAD

WSCAD GmbH is based in Bergkirchen near Munich and offers companies and independent workers fast and reliable E-CAD solutions with a superior price/performance ratio for all their electronic planning and documentation. With the modular and scalable WSCAD SUITE X Plus, users working in electronic engineering, cabinet engineering, P&ID, fluid engineering, building automation and electrical installation have all the tools they need for the planning, project specification and engineering of electrical systems and equipment.

Standardisation, re-use and automation considerably reduce the time required for planning and project specification whilst also delivering better quality results. With over 1.4 million part data items from more than 287 manufacturers, wscaduniverse.com is the world's largest E-CAD data library on the market and is unique thanks to its offering for WSCAD and Eplan* users. Use and set up of the data is free-of-charge for users and equipment manufacturers. Services from WSCAD Global Business Services such as engineering and migration check-up, workflow integration, consulting, training and the digitalisation and inputting of paper documentation and external E-CAD formats round off the product range.

WSCAD is part of the Buhl Group, an owner-managed software manufacturer in Germany with more than 700 employees. Employees in Bergkirchen and Würselen (North-Rhine Westphalia), together with an international dealer network, support customers across the world.

** These are third party brands which have no connection to WSCAD GmbH*